

COMUNE DI PIETRASANTA

Provincia di Lucca

Direzione Servizi del Territorio

U.O. Urbanistica e Grandi Opere

Attività Produttive, Sviluppo Economico e Politiche del Lavoro

U.O. Sportello Unico delle Imprese

Piano di Utilizzazione degli Arenili (P.U.A.) in Variante al Piano Particolareggiato degli Arenili

ai sensi dell'Art. 40 commi 2-7 L.R. 5/95 e
successive modifiche ed integrazioni

**SCHEDATURA DEGLI EDIFICI COMMERCIALI,
TURISTICO-RICETTIVI, DI INTERESSE COLLETTIVO E
PER LA FRUIZIONE COMUNE DI PROPRIETA' PRIVATA
SCALA 1:200**

Allegato T

Il Sindaco

MASSIMO MALLEGNI

L'Assessore all'Urbanistica

MARCO MARCHI

L'Assessore al Turismo ed alle Attività Produttive

LUCIANO SOMMARIVA

Il Dirigente Direzione Servizi del Territorio

U.O. Urbanistica e Grandi Opere

Arch. DANTE GALLI

Progetto Urbanistica e Coordinamento Generale

Arch. DANTE GALLI

Collaboratori

Geom. GIULIANO GUICCIARDI

Arch. PIERPAOLO BALDINI

Arch. BARBARA FARINA

Geom. ALESSANDRA GENOVESI

Funz. Amm. GIOVANNA MANZIONE

Rilievi e Progetto Grafico

Geom. ANDREA BERTOLINI

Geom. ILARIA FANCELLO




Geom. ILARIA NATUCCI

Tavola modificata a seguito approvazione del C.C. 42 del 28/07/2003



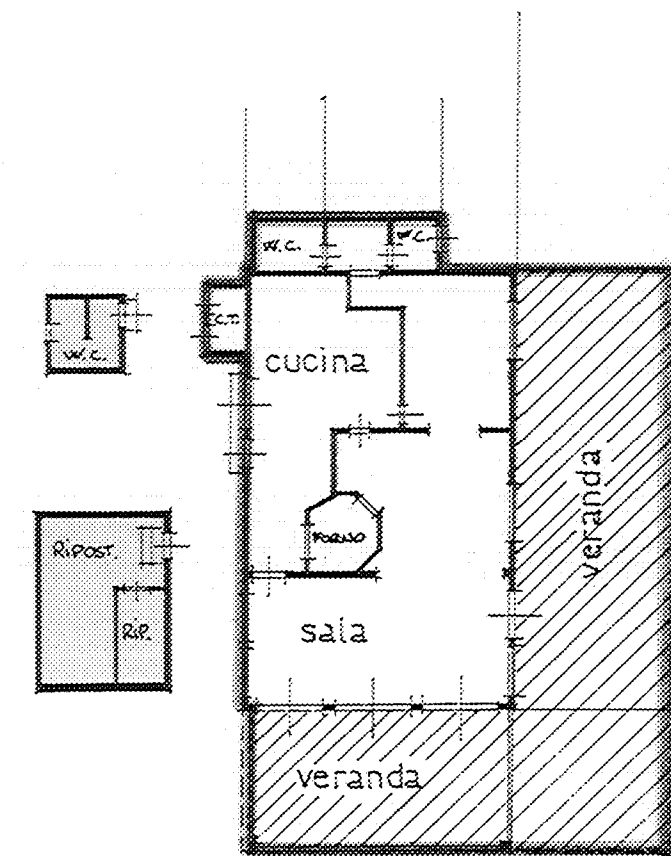
COMUNE DI PIETRASANTA
(Provincia di Lucca)

IMMOBILE (A)

-  SUPERFICIE COPERTA
MASSIMA
-  AMBITO DI ESPANSIONE
-  DEMOLIZIONE




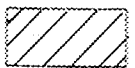
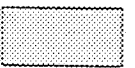
DOCUMENTAZIONE FOTOGRAFICA



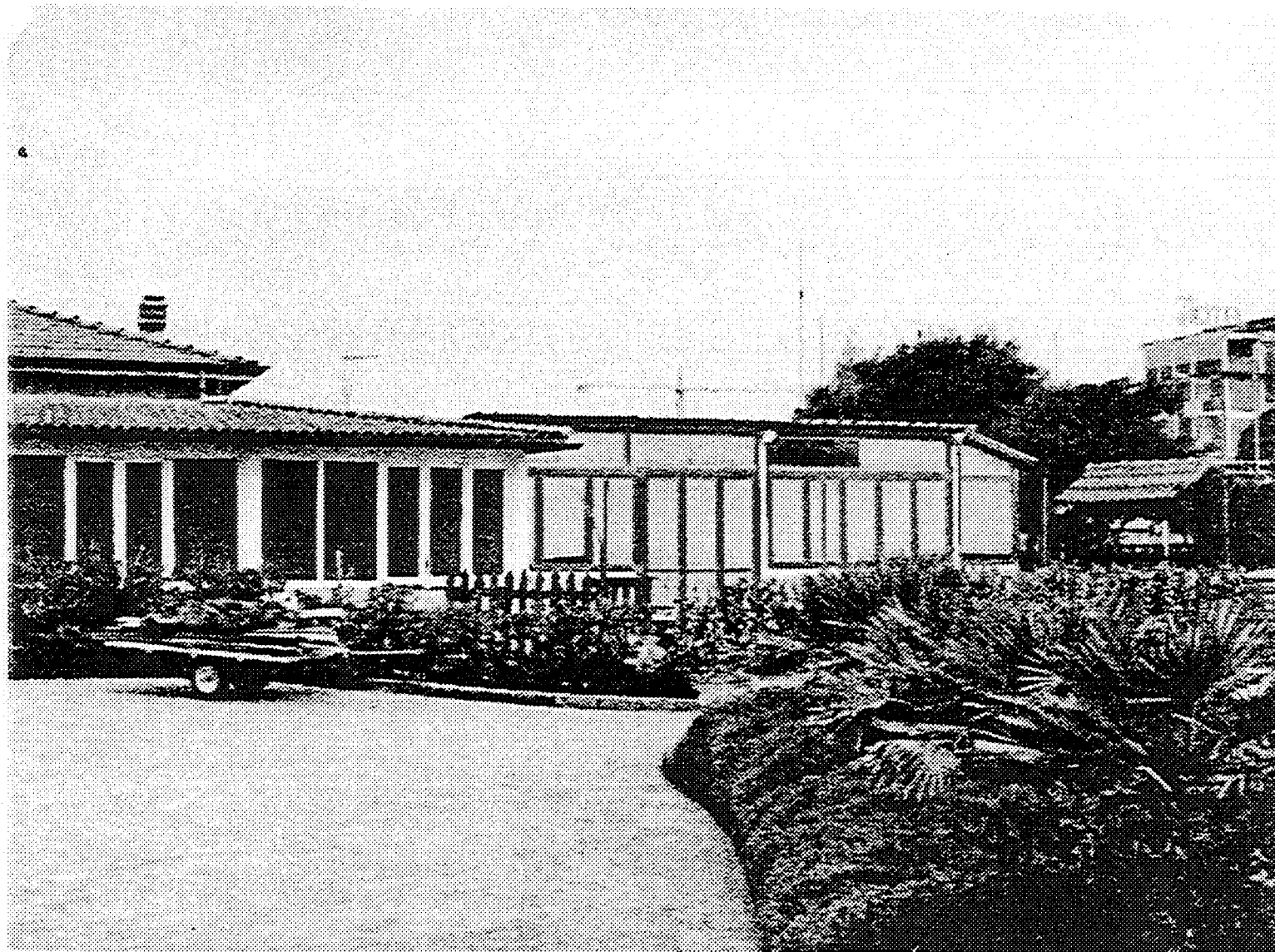
PIANTA SCALA 1/200

RISTORANTE "LA SCIABICA"

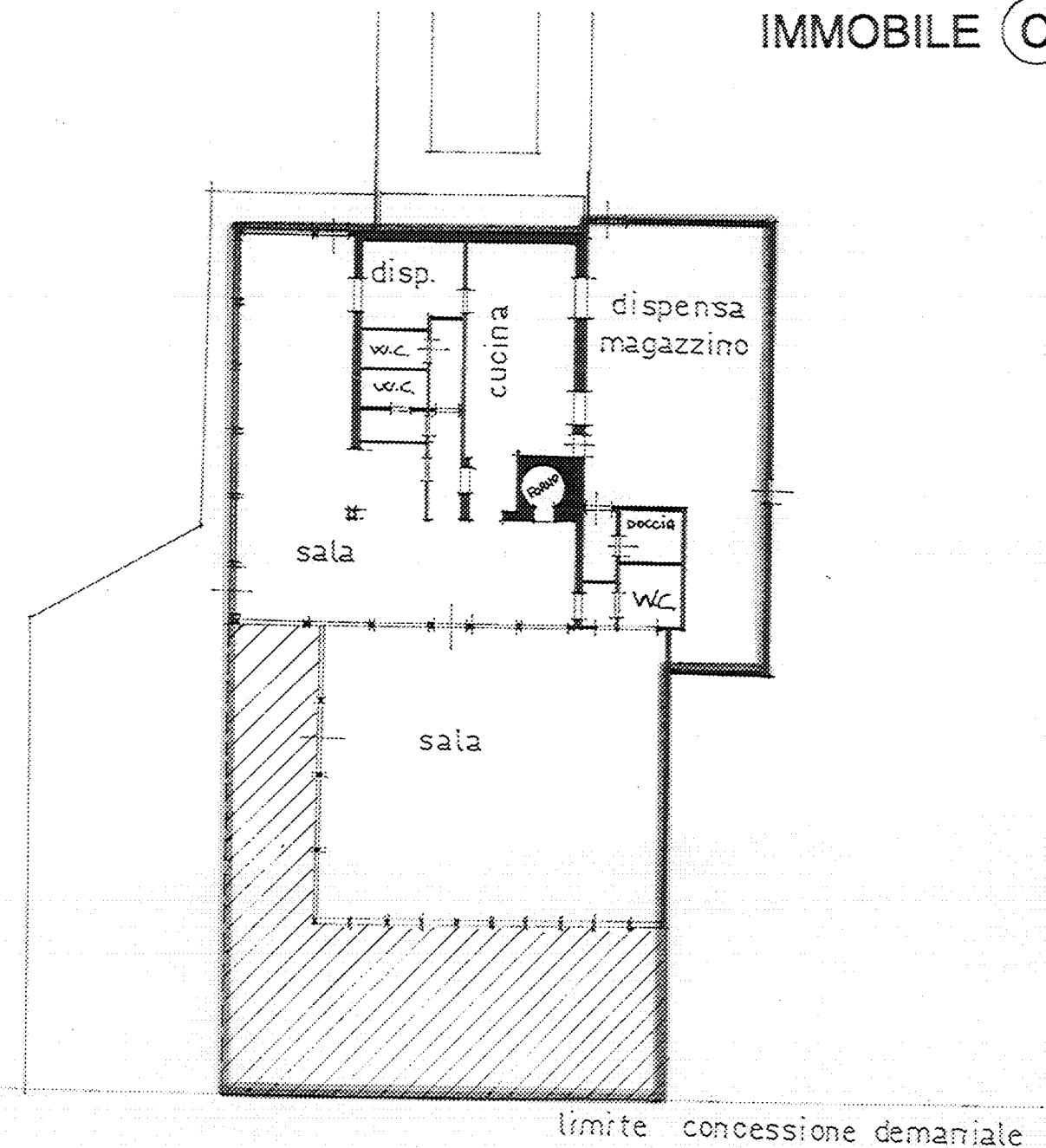
COMUNE DI PIETRASANTA
(Provincia di Lucca)

-  SUPERFICIE COPERTA MASSIMA
-  AMBITO DI ESPANSIONE
-  DEMOLIZIONE

IMMOBILE (C)



DOCUMENTAZIONE FOTOGRAFICA

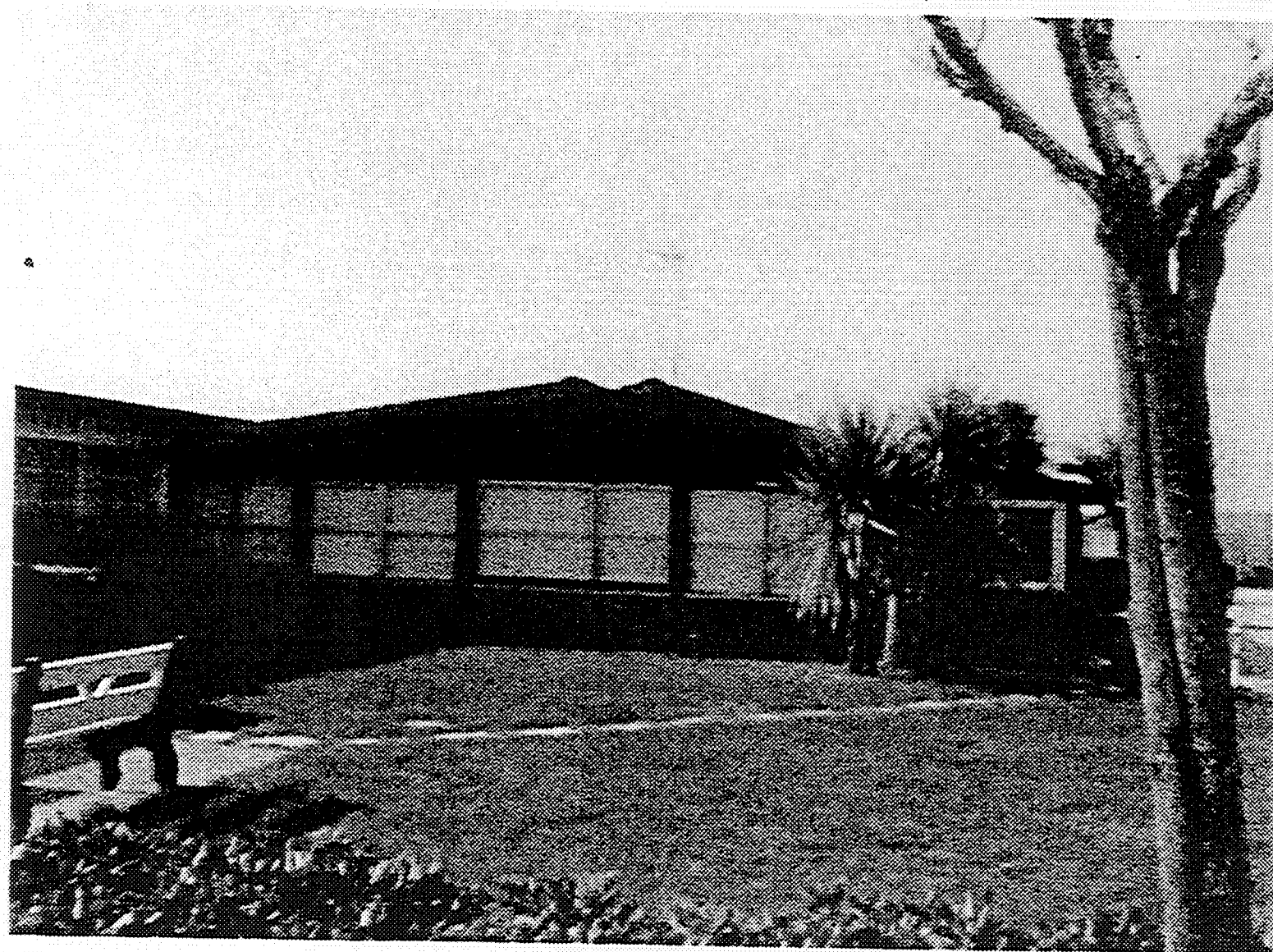


PIANTA SCALA 1/200

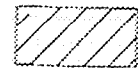

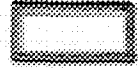
RISTORANTE "ARCIMBOLDO"

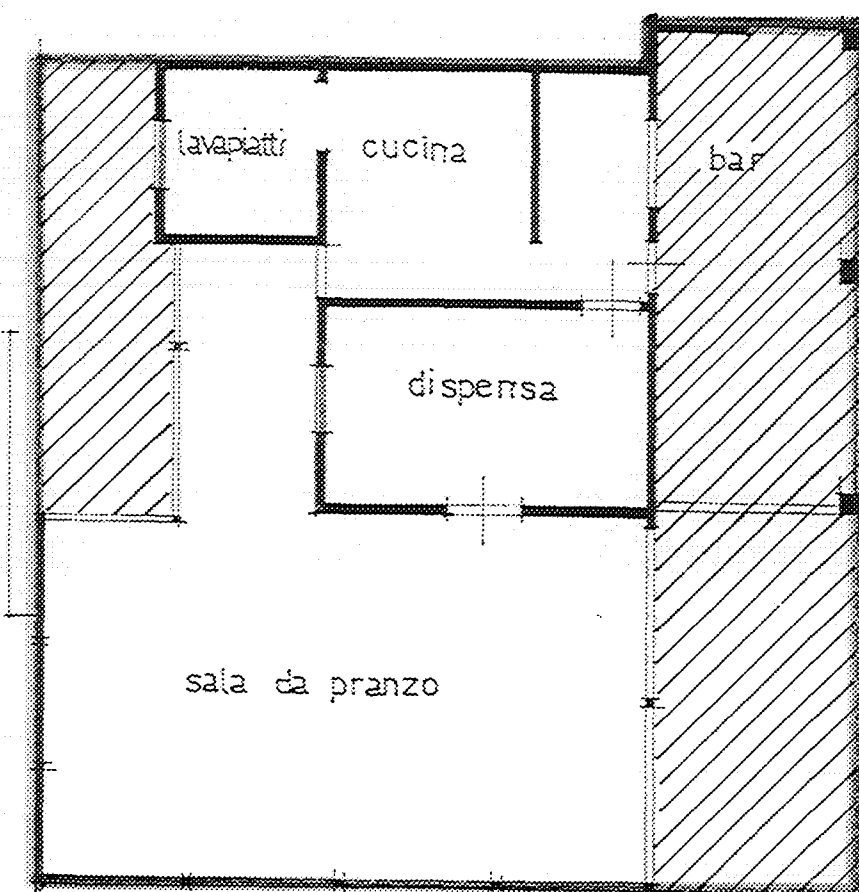
COMUNE DI PIETRASANTA
(Provincia di Lucca)

IMMOBILE (D)



DOCUMENTAZIONE FOTOGRAFICA

-  AMBITO DI ESPANSIONE
-  DEMOLIZIONE
-  SUPERFICIE COPERTA
MASSIMA

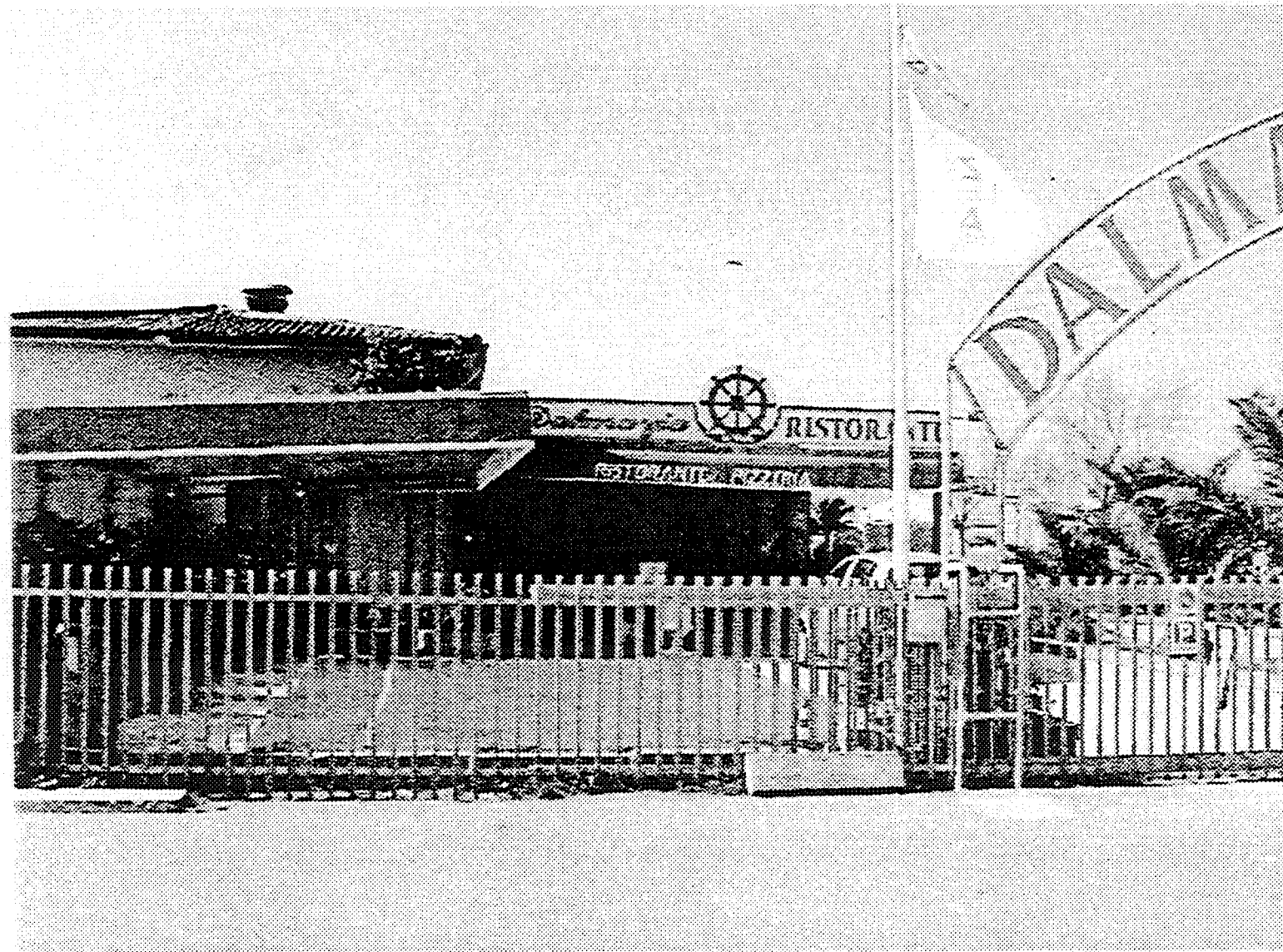



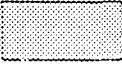

PIANTA SCALA 1/200

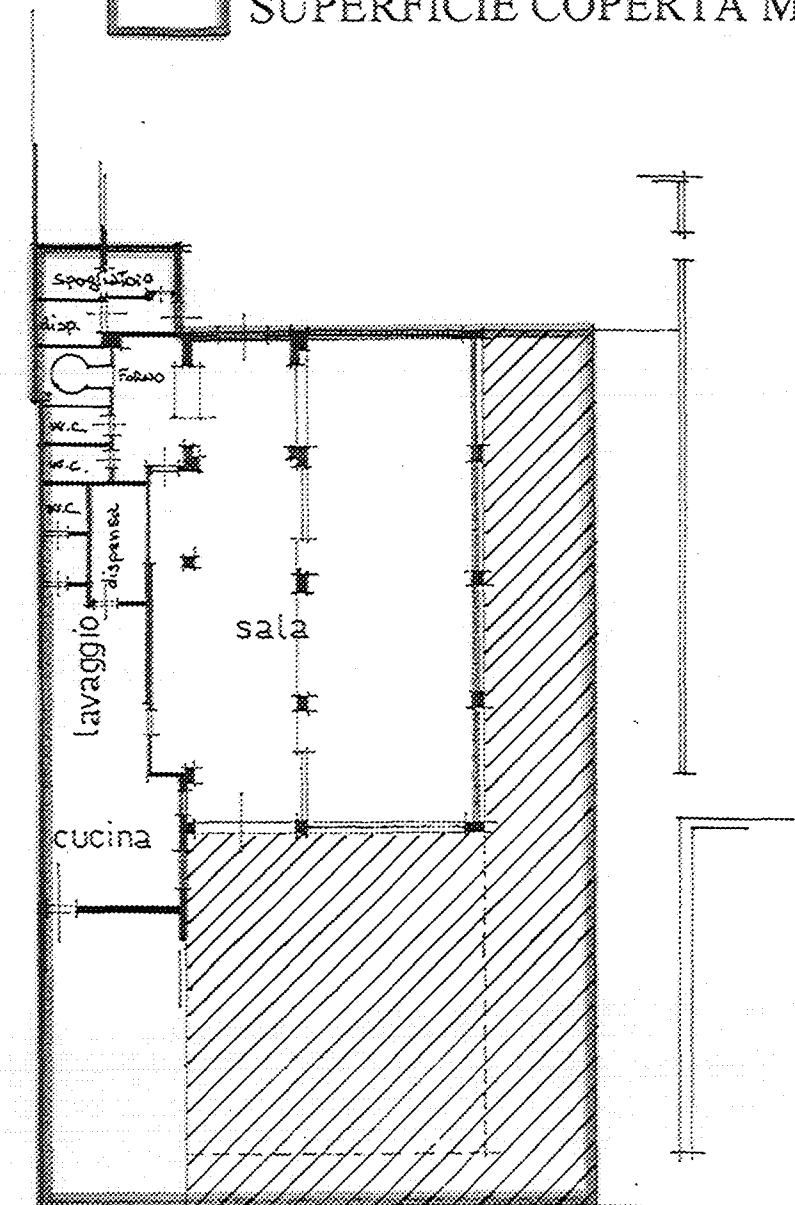
RISTORANTE "NETTUNO ALBA"

COMUNE DI PIETRASANTA
(Provincia di Lucca)

IMMOBILE (G)



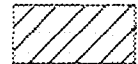


-  AMBITO DI ESPANSIONE
-  DEMOLIZIONE
-  SUPERFICIE COPERTA MASSIMA

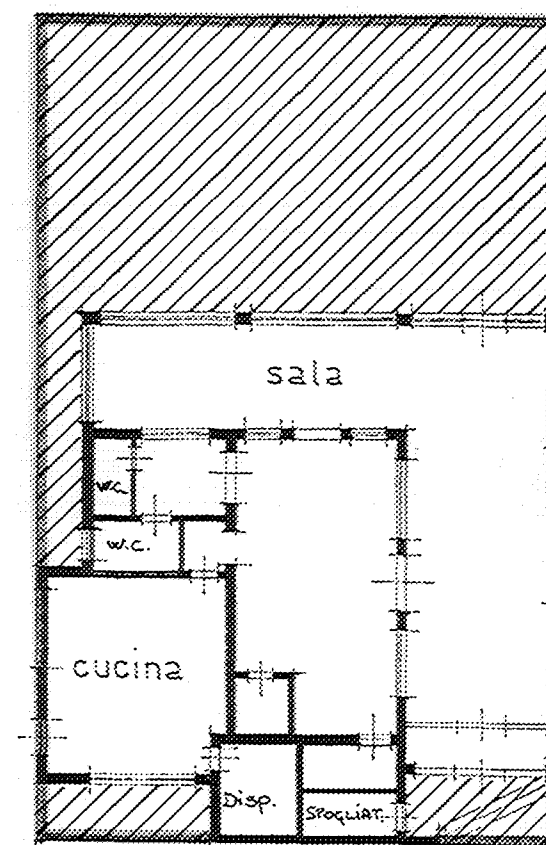


DOCUMENTAZIONE FOTOGRAFICA

PIANTA SCALA 1/200

RISTORANTE "DALMAZIA"

-  AMBITO DI ESPANSIONE
-  DEMOLIZIONE
-  SUPERFICIE COPERTA MASSIMA



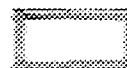


PIANTA SCALA 1/200

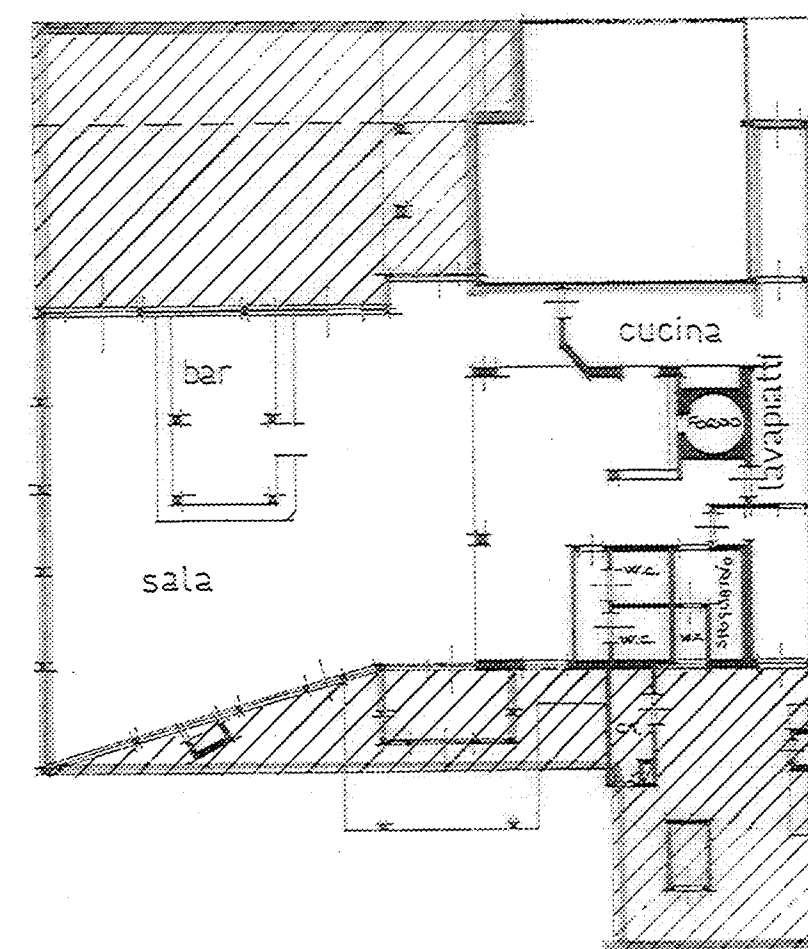
RISTORANTE "LIDO BISTROT"

COMUNE DI PIETRASANTA
(Provincia di Lucca)

IMMOBILE 



-  SUPERFICIE COPERTA
MASSIMA
-  AMBITO DI ESPANSIONE
-  DEMOLIZIONE



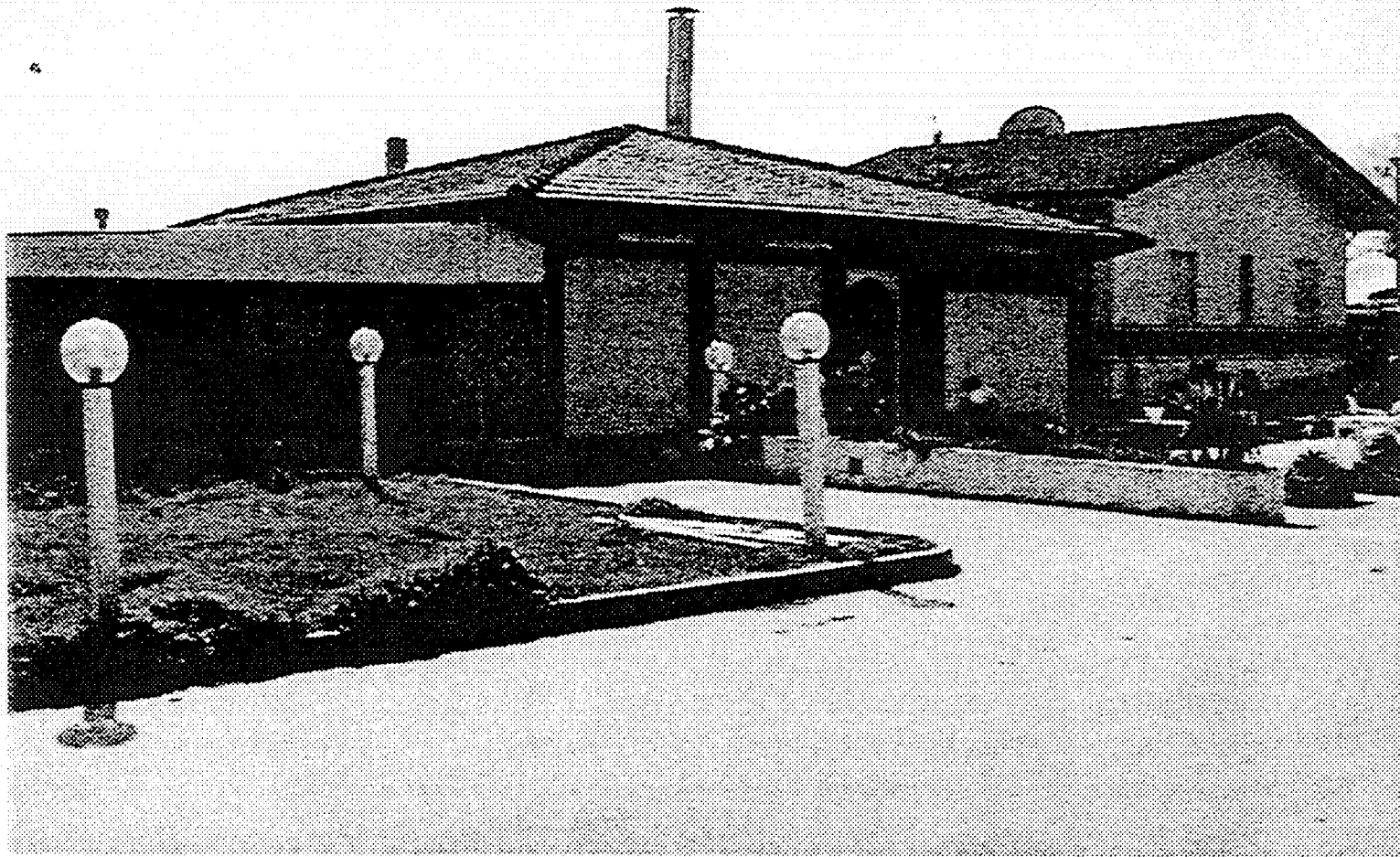
DOCUMENTAZIONE FOTOGRAFICA

PIANTA SCALA 1/200

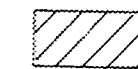
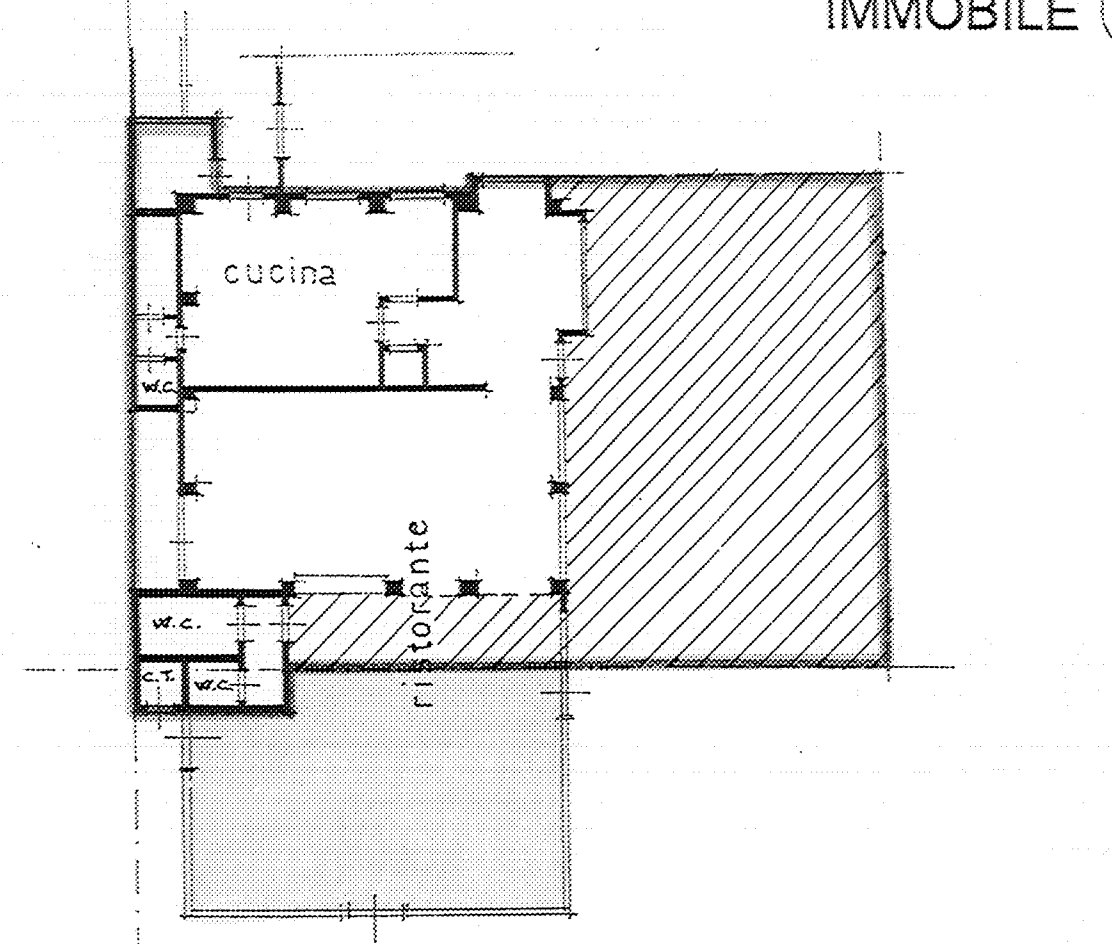
RISTORANTE "MALIBU"/ZANZIBAR"

COMUNE DI PIETRASANTA
(Provincia di Lucca)

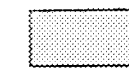
IMMOBILE (P)



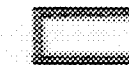
DOCUMENTAZIONE FOTOGRAFICA



AMBITO DI ESPANSIONE



DEMOLIZIONE




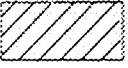
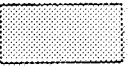
SUPERFICIE COPERTA
MASSIMA

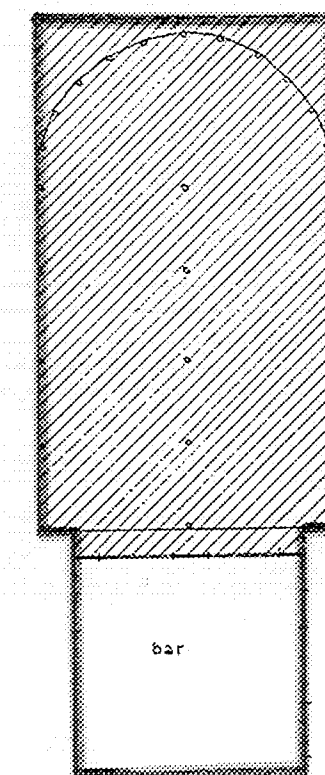
PIANTA SCALA 1/200

RISTORANTE "TRATTORIA DEL PESCE"

COMUNE DI PIETRASANTA
(Provincia di Lucca)

IMMOBILE (Q)

-  SUPERFICIE COPERTA
MASSIMA
-  AMBITO DI ESPANSIONE
-  DEMOLIZIONE



PIANTA SCALA 1/200

BAR "BAMBUZAO"

DOCUMENTAZIONE FOTOGRAFICA